



BREATHE

medium density housing
design and build competition
Christchurch 2013



Breathing new life into our central cities

Breathe - The new urban village project,
Whakaaturanga Kāinga Nohoanga

Verney Ryan

Building a Better NZ conference – September 2014



Creating homes and neighbourhoods that work
well into the future and don't cost the Earth

Vision

To create an exemplar central city neighbourhood displaying medium density homes, based on sustainable design principles, to inspire and shape modern urban living in Christchurch



Urban Development Strategy – City of Villages Concept



Perceptions and Fear

cramped leaky body corporate poor quality

poor amenity grey / soulless

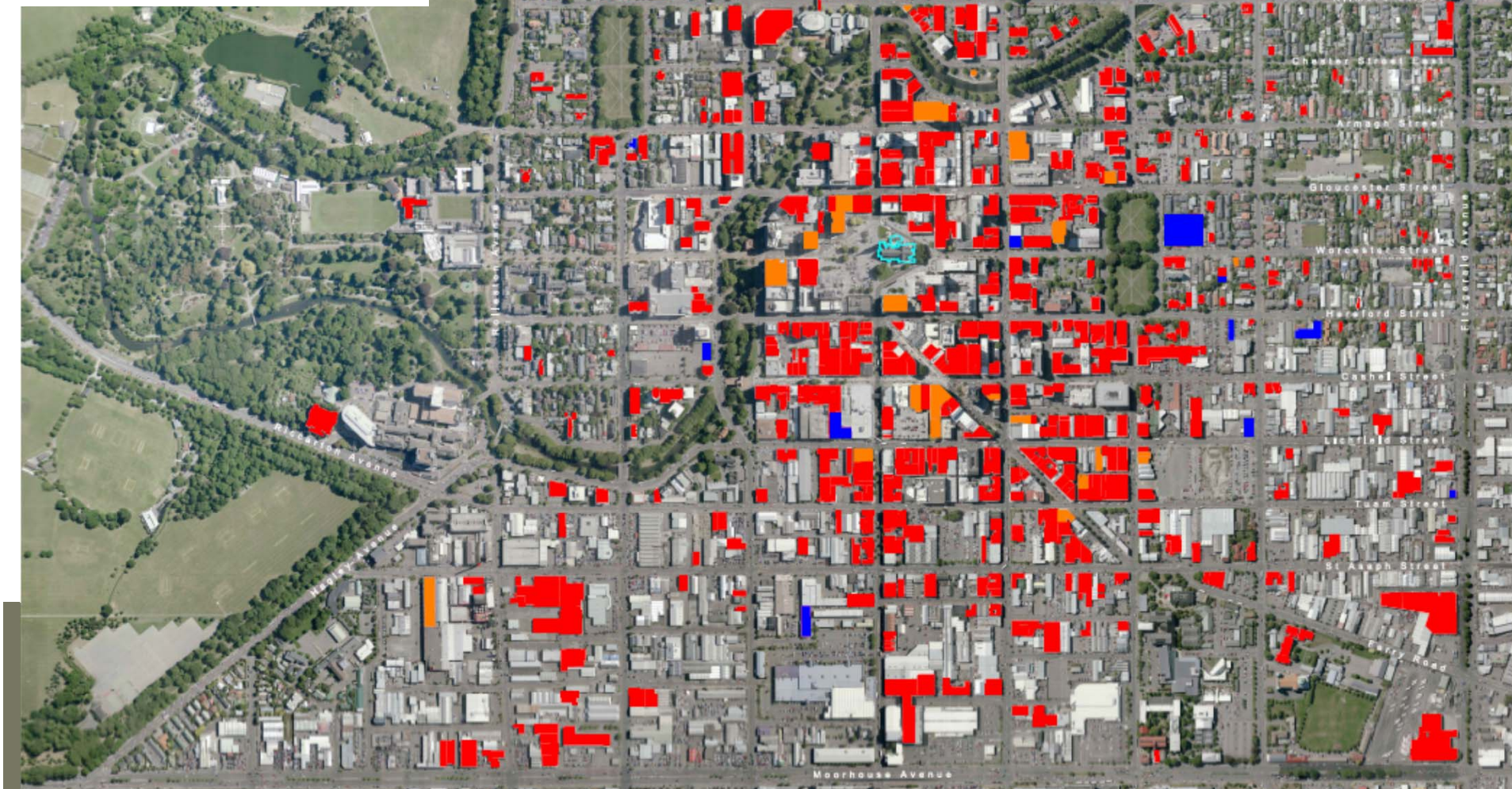
noisy parking woes
no privacy

unaffordable loss of lifestyle
no pets





Demolitions Central Christchurch July 2012





106,000 ideas



© Beacon Pathway Inc

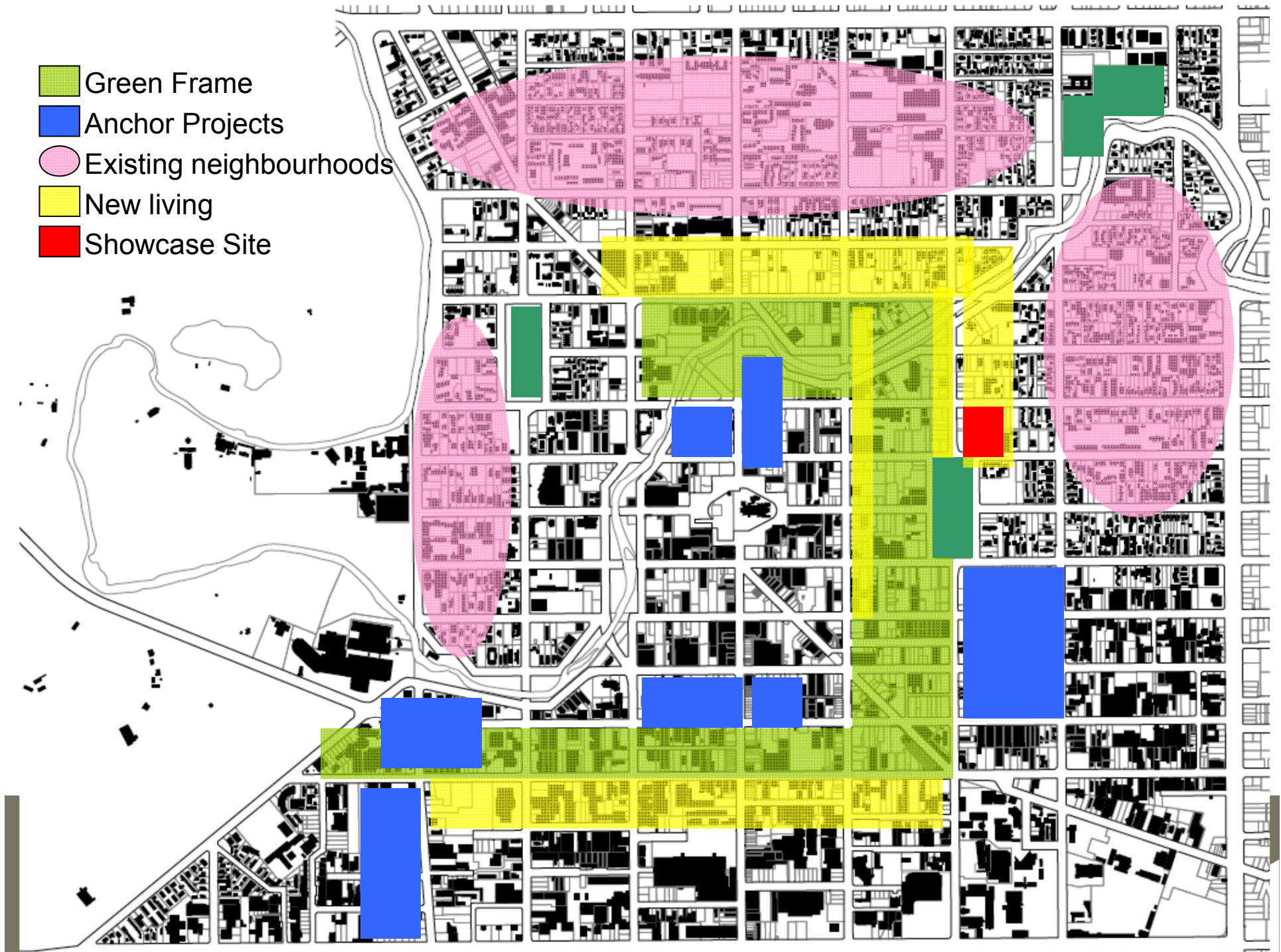


© Beacon Pathway Inc





- Green Frame
- Anchor Projects
- Existing neighbourhoods
- New living
- Showcase Site



Two Stage Design Competition

Stage 1 – Concept Design

Master plan and site concepts

October to
December 2012



Select top 4 designs & development consortia

Stage 2: Detailed Design

Detailed designs

Detailed designs
March to November 2013



Commence Build 2014 onwards

Select winning design &
development consortia



Design Principles

Liveable

Affordable

Viable

Sustainable

Resilient

Innovative

Sense of place

Deliverable



Triangle Swindon, UK

© Beacon Pathway Inc

Toolkit for change

- Beacon worked with MBIE and CCC to catalyse and facilitate the competition
- Developed toolkit based on experience
- Designed to assist organisations interested in pursuing similar *design and build*
- Developed to inspire and catalyse other demonstrations



Main toolkit areas

- Value Case – benefits of Design and Build
- Framing the Vision
- Partnerships and Sponsors
- Developing the Brief
- Running the competition
- Judging and Process
- From ideas to Demonstration
- Further resources



Key Lessons Learned

- Vision is key
- Land is Central
- Judging is Tricky
- Development is Complex
- Demonstration Delivers Change
- Ideas are Opportunities





Project drawing from Anselmi Attiani Associated Architects, Holloway Builders.
Courtesy of Breathe - The New Urban Village project.



Project drawing from Anselmi Attiani Associated Architects, Holloway Builders.
Courtesy of Breathe - The New Urban Village project.



VIEW FROM LATIMER SQUARE

Project drawing from Anselmi Attiani Associated Architects, Holloway Builders.
Courtesy of Breathe - The New Urban Village project.



Project drawing from Anselmi Attiani Associated Architects, Holloway Builders.
Courtesy of Breathe - The New Urban Village project.



Project drawing from ZEDFACTORY, ZEDPROJECTS, UNITED KINGDOM
Courtesy of Breathe - The New Urban Village project.



Project drawing from ZEDFACTORY, ZEDPROJECTS, UNITED KINGDOM
Courtesy of Breathe - The New Urban Village project.



Project drawing from HALLION DESIGN LTD, ALL DESIGN LTD AND INFRATIL INFRASTRUCTURE PROPERTY LTD, NEW ZEALAND AND UNITED KINGDOM Courtesy of Breathe - The New Urban Village project



Project drawing from HALLION DESIGN LTD, ALL DESIGN LTD AND INFRATIL INFRASTRUCTURE PROPERTY LTD, NEW ZEALAND AND UNITED KINGDOM Courtesy of Breathe - The New Urban Village project.

Project drawing from Anselmi Attiani Associated Architects, Holloway Builders.
Courtesy of Breathe - The New Urban Village project.

Project drawing from Anselmi Attiani Associated Architects, Holloway Builders.
Courtesy of Breathe - The New Urban Village project.

Project drawing from Anselmi Attiani Associated Architects, Holloway Builders.
Courtesy of Breathe - The New Urban Village project.

Project drawing from Anselmi Attiani Associated Architects, Holloway Builders.
Courtesy of Breathe - The New Urban Village project.



Project drawing from Anselmi Attiani Associated Architects, Holloway Builders.
Courtesy of Breathe - The New Urban Village project.

project organisers



project partners



project sponsors



www.futurechristchurch.co.nz/breathe



© Beacon Pathway Inc

Vision

To create an exemplar central city neighbourhood displaying medium density homes, based on sustainable design principles, to inspire and shape modern urban living in Christchurch

Partners







1. The new urban village **BREATHE**

Site Plan - scale 1:200

