

Facing

Newsletter of Beacon Pathway

February 2007



Best Paper Award

Neighbourhoods team, Denise Bijoux, Katja Lietz and Kay Saville-Smith, won a best conference paper award at the UPE7: World Class Cities – Environmental Impacts and Planning Opportunities conference in Bangkok in January. The conference paper, “Measuring neighbourhood sustainability in New Zealand” is available to read on the **Beacon website**.

The Neighbourhoods team will also be presenting a paper to the New Zealand Planning Institute Conference 2007: The Politics of Planning. This will focus on the prototype tool for assessing the sustainability of neighbourhoods, being developed out of the Neighbourhood Sustainability Framework.

Other Conference Presentations

Other Beacon researchers have also been busy giving and planning conference papers for 2007.

Policy and Regulation team leader, Lois Easton, will present a paper on Beacon’s High Standard of Sustainability and how it might be applied to New Zealand’s residential built environment, to the 2nd International Conference on Sustainability Engineering and Science - Talking and Walking Sustainability (New Zealand Society of Sustainable Engineering Science). She will also present a paper on the current case studies on local council barriers to sustainable building to the New Zealand Planning Institute Conference 2007: The Politics of Planning.

NOW Home® open day

The Waitakere NOW Home® at 1 Olympic Place, New Lynn, will be open to the public on 4 March 2007, 10am-4pm as part of Waitakere’s Eco Day. Tours of the house will run every half hour on the hour.

For more information, visit: www.nowhome.co.nz

Conferences you need to know about

SB07: Transforming our built environment

14-16 November 2007
Auckland

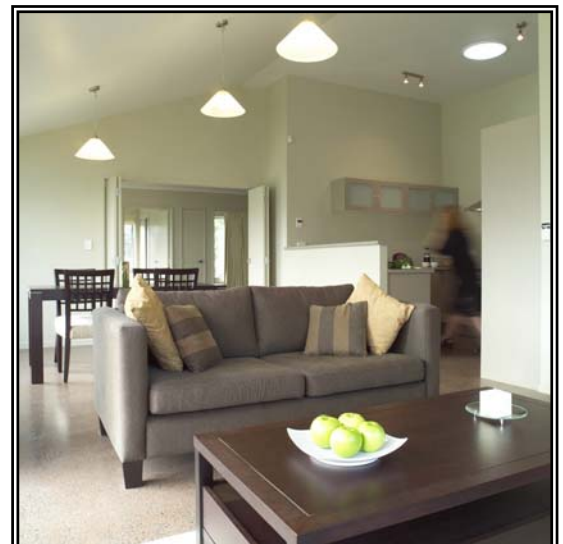
SB07 NZ is one of the local and regional conferences held around the world in the lead up to SB08 in Melbourne 2008. It will bring together a wide range of industry stakeholders to focus on sustainable building in the New Zealand environment. The main goal of SB07 NZ is to increase the adoption of sustainable practices in design, production and use of our built environment moving forward into the future.

The information presented and discussions held at SB07 NZ will feed into a report summarising the current state of sustainable building in New Zealand and outlining an action plan for submission to the global SB08 conference.

Further information is attached (pp 3-6) and also available on www.sb07.org.nz

Conference planner

To help you plan ahead, we attach a list of relevant conferences from New Zealand and overseas (pp 7 – 10).



Inside the
Waitakere
NOW Home®

Effective renovations

Beacon has commenced a range of different energy renovations in the homes participating in the NOW Home® Renovation project in Papakowhai. These renovations include a range of different combinations of thermal envelope, hot water and space heating options, including:

- varying insulation standards in the ceiling, underfloor and walls;
- double glazing and secondary double glazing systems;

- solar hot water systems and wetbacks;
- heat pumps, pellet burners and low emission wood burners; and
- a range of smaller scale energy efficiency interventions.

The energy use of the homes has been monitored for six months prior to the renovations being undertaken.

Beacon would like to thank companies supporting this project with donations and discounts. Key suppliers and supporters of the project so far have been:

Azuro Solar



BRANZ Ltd



EnergySmart



Fisher Windows



Fletcher Aluminium



Hutt Mana Charitable Trust



Metro Glass Tech



Tasman Insulation



Winstone Wallboards



Case studies

Beacon's work in evaluating and identifying potential barriers to sustainable building in Auckland City Council's planning regulations and processes is being developed into a tool kit for councils to assist in clearing the way for sustainable features at a local government level.

To broaden the applicability of the tool kit and ensure its fit with councils around the country, the Policy and Regulation team are undertaking further case studies. The planning systems of Kapiti District Council, Christchurch City Council and Hamilton City Council are all being studied.